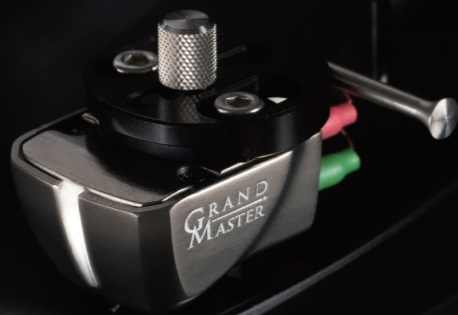
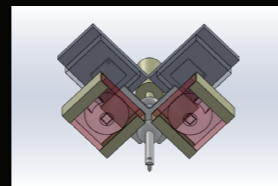


# GRAND MASTER

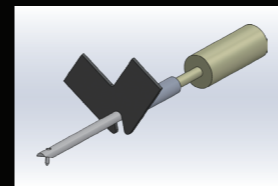
The quest for analogue utopia comes to an end.  
Enter the next generation... enter Grand Master.



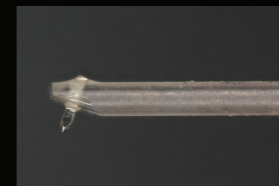
## Cartridge



Independent LED and photo-detector arrangement for the left and right channels



Weight of shading plate reduced by more than 50%



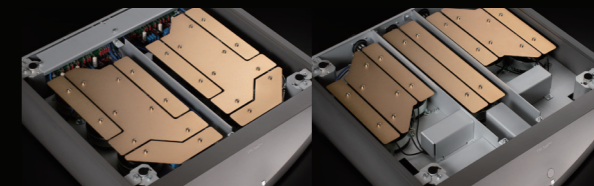
Diamond cantilever

The new Grand Master optical cartridge system has been optimized, by implementing an independent LED and photo-detector arrangement for the left and right channels. As a result the cartridge output voltage has greatly increased from 40mV to 70mV. The Grand Master cartridge offers a greatly improved S/N ratio when compared to its stable mates, resulting in an even lower noise floor and far greater musical clarity.

The implementation of independent left and right channel LED's allows for the positioning of the optical system to be optimized as well as necessitating the use of a new shading plate that has been significantly reduced in size compared to our earlier designs. In addition to this reduction in size, the material used to produce the shading plate has changed from aluminium (as used in the second generation cartridges) to 99.9% pure beryllium.

A first for DS Audio, the Grand Master cartridge features the combination of a diamond cantilever with a microridge stylus. The cartridge body structure has been designed in such a way as to promote maximum rigidity. In addition to these features, the Grand Master utilizes internal wiring 1.6 times thicker than used in the second generation cartridges in order to reduce impedance.

## Equalizer



Power unit and equalizer unit are completely separate units



Total of 6 optional low frequency cut off point

The DS Audio Grand Master equalizer features separate equalizer and power supply units, each contained in completely independent housings. The use of 2.34 million uF and 2.97 million uF electrolytic capacitors within the equalizer and power supply units respectively has resulted in a significantly stronger power supply design and made improved reproduction of deeper low frequencies possible. In addition to this, the Grand Master equalizer incorporates special film capacitors custom built to DS Audio's specifications and non-induction winding resistors. The design features a total of three transformers, each with a capacity 1½ times greater than that of the DS Master 1. One each, for the left and right channels, with the third handling the power supply to the optical cartridge.

The Grand Master equalizer offers both single ended RCA and balanced XLR outputs and a total of 6 optional low frequency cut off points in order to allow the Grand Master to be tailored to marry seamlessly with any hi-fi system.

### Grand Master Optical Cartridge

Signal output	Photo-electric Conversion
Channel separation	27db more (1KHz)
Weight	7.7g
Output signal level	70mV more
Canti-lever	Diamond
Body material	Ultra duralumin
Cantilever holder material	Stainless
Needle pressure	2.0g~2.2g(2.1g is recommended)
Stylus	Micro Ridge

### Grand Master Equalizer for Optical Cartridge

Output voltage	700mV(1kHz)
Output impedance	RCA 120Ω XLR 120Ω
Pre amp input impedance	More than 10kΩ
Input terminal	RCA terminal
Output terminal	RCA terminalx3, XLR terminalx3
Size	W45.2cmxH15.2cmxD48.6cm(Both)
Weight	25.1kg(Equalizer unit) 29.8kg(Power unit)