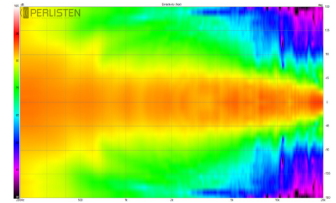
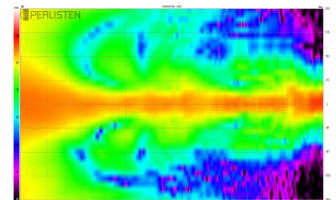


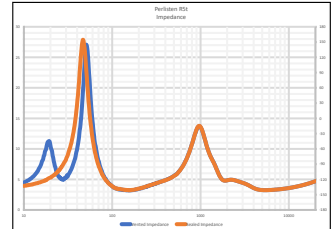
Horizontal Directivity



Vertical Directivity



Impedance



MODEL R5 TOWER: Designed as a stand alone 2ch high fidelity speaker with the versatility to be used as part of multi-channel systems. Sharing “trickle-down” technology from our flagship S-Series, the DPC-Array here based on three 26mm domes, guarantees excellent directivity control and timbre matching with all R-Series speakers. The Silk diaphragms developed ground up, chosen specifically their smooth, effortless representation of midrange and treble. The 165mm woofers are made from our proprietary HPF pulp, two years in development, bringing new technology to one of the oldest materials used in loudspeaker design. These woofers can be aligned as bass reflex or acoustic suspension depending on specific tastes. Rich, dynamic bass matched with advanced mid/treble directivity pattern control and silky highs offer best in class performance.



Technical Specifications:

Enclosure Alignment	3-way bass reflex / acoustic suspension
Driver compliment	DPC-Array: 26mm(3) Silk dome Woofers: 165mm(2) HPF diaphragms
Sensitivity	89.0dB / 2.83v / 1.0m
Impedance	4Ω nominal / 3.2Ω min
Response Linearity	80 - 20kHz +/-1.5dB window
Frequency Response (-10dB)	bass reflex: 24 - 32kHz acoustic suspension: 38 - 32kHz
Typical In Room bass extension	bass reflex: 21Hz acoustic suspension: 32Hz
Dimensions (HxWxD)	1100 x 230 x 350mm 43.3 x 9.0 x 13.7"
Weight	26.5 kg (58.3 lbs.)
Recommended Amplifier Power	100 - 250W RMS
SPL capability @1m (100-20kHz)	113.0dB peak <3% - 2nd, 3rd Harmonics
Certification	THX Dominus, THX Ultra
Available finishes	High Gloss Black

DPC Array - Directivity pattern control
*USA Patent pending



HPF - Hybrid Pulp Formulation. Diaphragms made from mixed long fiber hardwood, bamboo and wool

